

ISI Linux

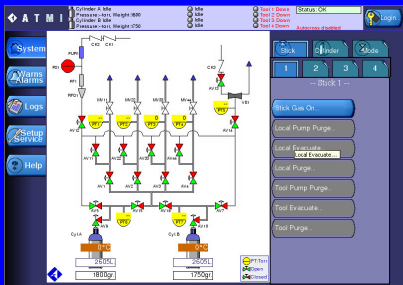
Version 2.0

www.isilinux.com



ISI Linux has become our de facto standard for all new product development for our process control and instrumentation applications. We feel this provides us with a competitive advantage, enabling services not available any other way. The Linux platform also provides tighter security than available with competing OS's and with the large development effort in the Linux world, keeps our products at the state of the art without having to upgrade or buy new drivers, etc. Overall the ISI Linux OS keeps our product costs low, reliability and security high, and provides long term confidence for OS support, availability, and vitality.

Steven M. Lurcott
Director Control Systems—ATMI



ISI LINUX

ISI Linux Images

Open source OS for Embedded Systems

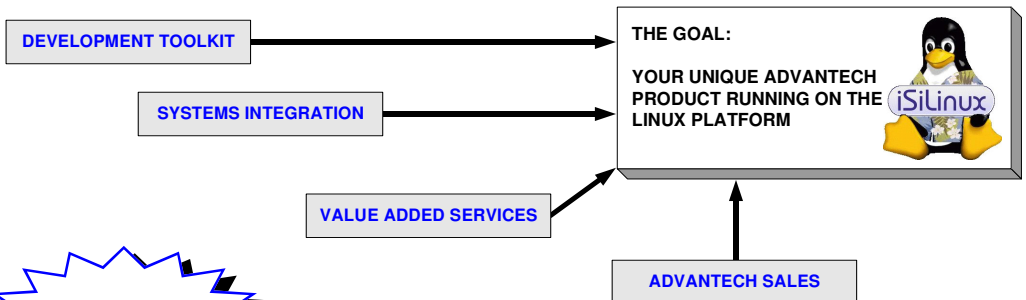
The Integrated Solutions ISI Linux family of products brings the power and flexibility of the open source Linux operating system to the Advantech line of computing and HMI platforms. This combination creates the opportunity to quickly create a variety of customized solutions that are particularly complementary to Advantech's touch panel or Embedded computers. Whether you are building industrial automation control systems, stand-alone or networked kiosks, point of sales systems, or other solutions that demand the power of Linux, you'll find ISI Linux to be invaluable.

ISI Linux Images:

- Image1 (Base)
 - Lean Kernel plus important utility files (ssh, nfs, etc.)
- Image2 (Base + X)
 - + X Windows + gtk +gd + fwm + Browser
 - + Apache, php with gd graphics lib, PostgreSQL and all libs
- Image3 (Base + X + Java)
 - + X Windows + gtk +gd + fwm + Browser
 - + Apache, php with gd graphics lib, PostgreSQL and all libs
 - + Java enabled browser



The Apache Software Foundation
<http://www.apache.org/>



Order pre-installed on Advantech Hardware

(All prices subject to change)

Integrated Solutions, Inc.

16602 North 23rd Avenue, #109
Phoenix, AZ 85023

Phone: 602-437-5209
Fax: 602-437-5313
Email: info@isiaz.com



Supported Hardware:

- Advantech TPC 1260/1560 T
- Advantech PPC S123/153 T
- Advantech UNO-2053, 2059, 2160

MORE COMING SOON!

(touchscreen support for panel computers)

www.advantech.com/ia